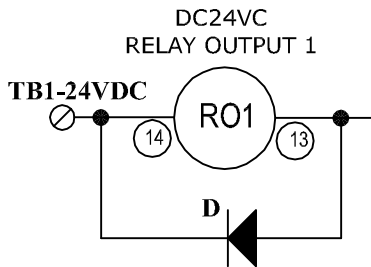


NOTE:

Brick controller provides a standard I/O capability of 16 Inputs and 8 Outputs at 12-24VDC at connector J6. Connector J7 and J8 are expandable option for I/O

TB1-COM



NOTE:

All I/O is electrically isolated from drive. Inputs can be configured for sinking or sourcing applications. All inputs are 12-24VDC. All outputs are 24V nominal operation, 0.5A maximum current. Outputs are robust against ESD and overload.
 *For sinking outputs, connect the COM_EMT(pin11) line to the analog ground of the power supply and the outputs to the individual plus outputs lines , e.g. GPO1+
 *For sourcing outputs, connect the COM_COL(pin29) line to 12-24V and the outputs to individual minus output lines, e.g., GPO1-

**BRICK CONTROLLER
GENERAL PURPOSE I/O(J6) FEMALE DB37**

PIN	SYMBOL	DESCRIPTION
1	GPIN01	INPUT 1
20	GPIN02	INPUT 2
2	GPIN03	INPUT 3
21	GPIN04	INPUT 4
3	GPIN05	INPUT 5
22	GPIN06	INPUT 6
4	GPIN07	INPUT 7
23	GPIN08	INPUT 8
5	GPIN09	INPUT 9
24	GPIN10	INPUT 10
6	GPIN11	INPUT 11
25	GPIN12	INPUT 12
7	GPIN13	INPUT 13
26	GPIN14	INPUT 14
8	GPIN15	INPUT 15
27	GPIN16	INPUT 16
9	IN_COM	INPUT 01 TO 08 COMMON
28	IN_COM	INPUT 09 TO 16 COMMON
10	N.C.	NOT CONNECTED
29	COM_COL	COMMON COLLECTOR
11	COM_EMT	COMMON EMITTER
30	GPO1+	SINKING OUTPUT 1
12	GPO1-	SOURCING OUTPUT 1
31	GPO2+	SINKING OUTPUT 2
13	GPO2-	SOURCING OUTPUT 2
32	GPO3+	SINKING OUTPUT 3
14	GPO3-	SOURCING OUTPUT 3
33	GPO4+	SINKING OUTPUT 4
15	GPO4-	SOURCING OUTPUT 4
34	GPO5+	SINKING OUTPUT 5
16	GPO5-	SOURCING OUTPUT 5
35	GPO6+	SINKING OUTPUT 6
17	GPO6-	SOURCING OUTPUT 6
36	GPO7+	SINKING OUTPUT 7
18	GPO7-	SOURCING OUTPUT 7
37	GPO8+	SINKING OUTPUT 8
19	GPO8-	SOURCING OUTPUT 8

DISCLAIMER: THIS DWG IS FOR ILLUSTRATION ONLY. ALWAYS REFER TO MANUFACTURER DOC THIS IS AN UNCONTROLLED COPY

THCE ELECTRONIQUE INC.		<small>1950A, BOUL. MARIE-VICTORIN, ST-BRUNO-DE-MONTARVILLE, QUEBEC J3V 6B9 TEL:(450) 653-5199 FAX:(450) 653-5744</small>	
DESIGNED BY:	PROJECT:	GENERAL PURPOSE I/O CONNECTION(J6)	
VERIFIED BY:	DESCRIPTION:	BRICK CONTROLLER I/O CONNECTION	
APPROVED BY:	DRAWING NO.:	XXXXXXX	
DATE:	REVISION:	1	
24/JAN/2011	NOTE:		